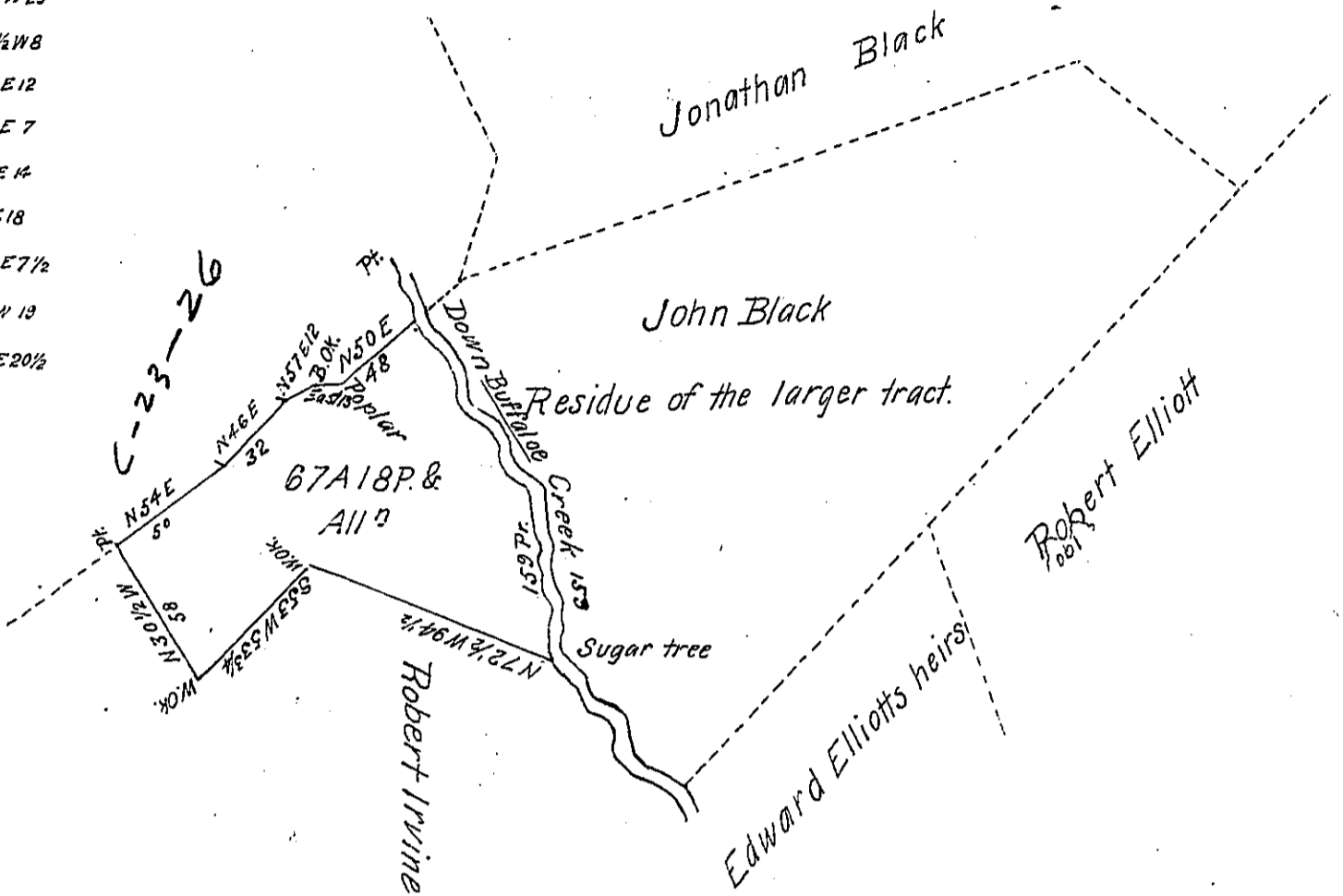


Courses & distances down Buffalo

- 8 19 E 5
- 3 68 E 6
- 5 44 1/2 E 13
- 5 8 W 29
- 5 17 1/2 W 8
- 3 15 E 12
- 5 79 E 7
- 8 19 E 14
- 3 4 E 18
- 5 59 E 7 1/2
- 5 12 W 19
- 5 39 E 20 1/2



A Draught of a tract of Land Situate in Tyrone Township Cumberland County Containing 67A 18 pr. & allowance of Six P. Cent for Road &c. It being part of a larger tract of 303<sup>a</sup> 3P & allowance surveyed in pursuance of a warrant granted to John Black dated the \*28<sup>d</sup> day of March 1763.

To Andrew Porter Esq<sup>r</sup>

\* Say 22<sup>d</sup>

W<sup>m</sup> Wheeler D.S.

S.G.

IN TESTIMONY that the above is a copy of the original remaining on file in the Department of Internal Affairs of Pennsylvania, made conformably to an Act of Assembly approved the 16th day of February, 1833, I have hereunto set my Hand and caused the Seal of said Department to be affixed at Harrisburg, this Fifth day of January 1904

*Isaac P. Brown*  
 Secretary of Internal Affairs.